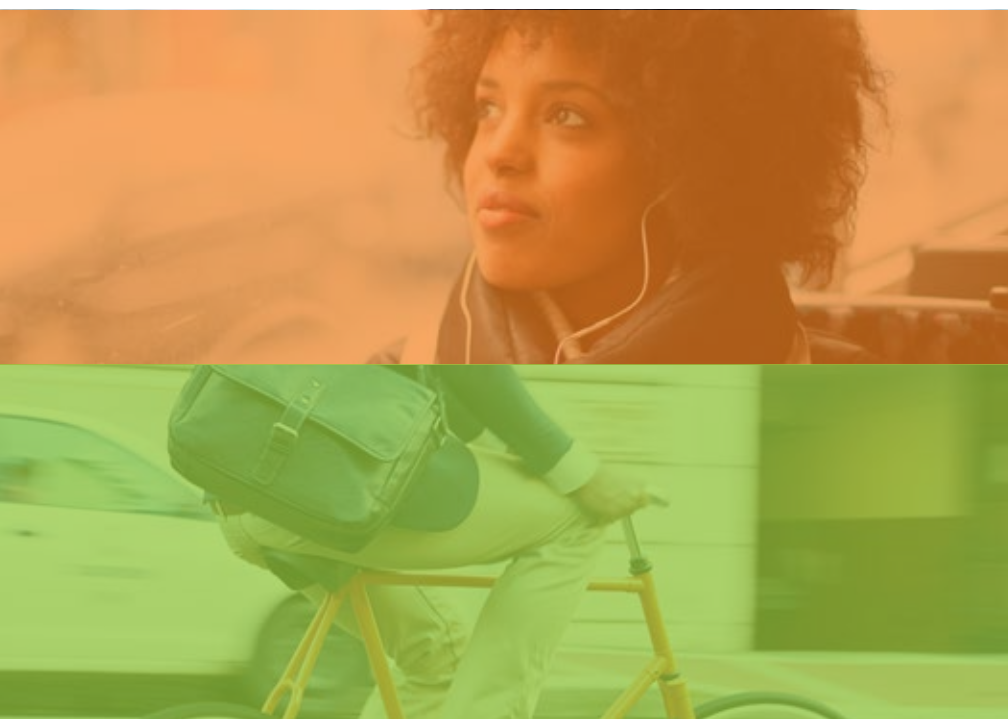


# More Go. Less Stress.

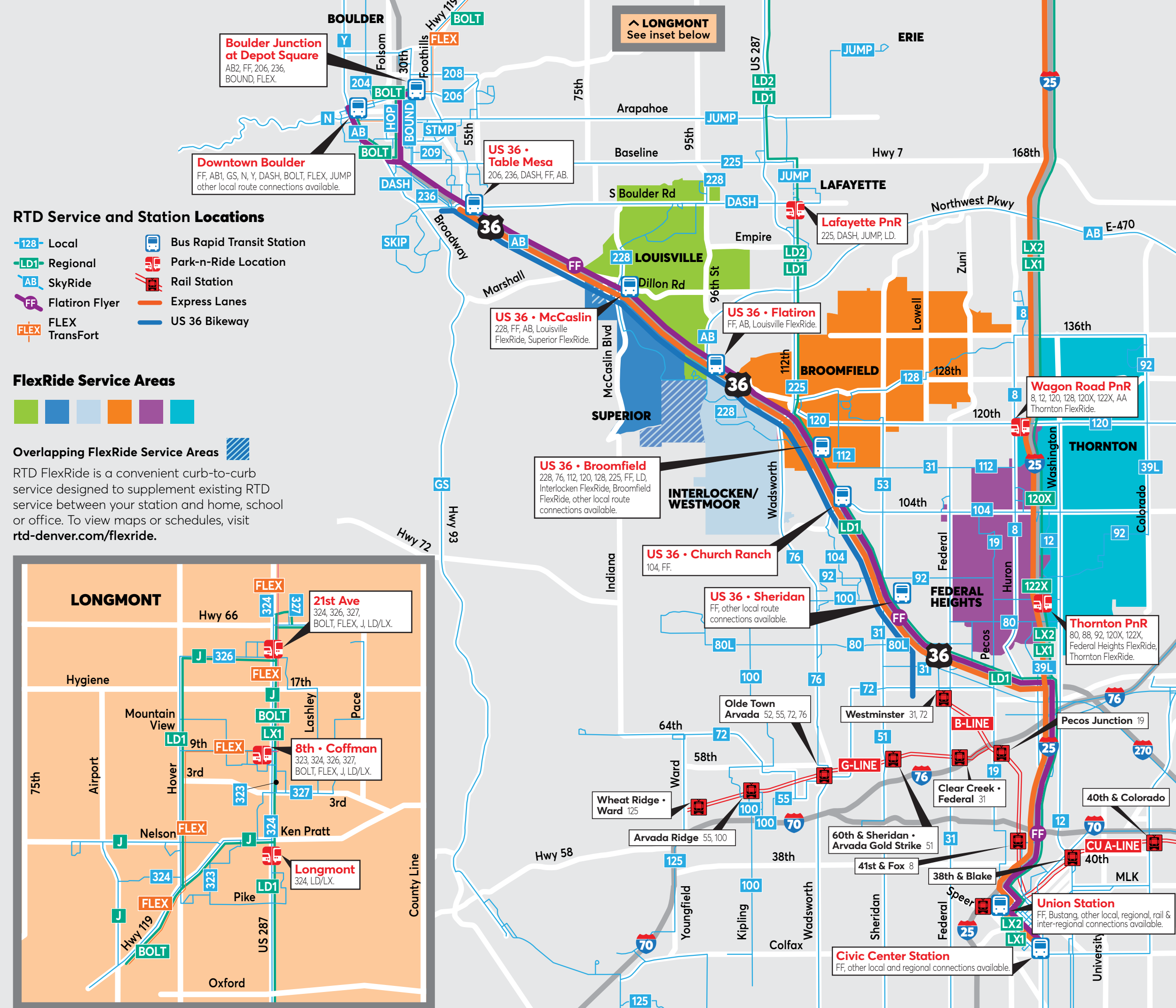
The Northwest Metro Region is a vibrant hub of economic growth and activity. Whether you live, work or play in our region, connecting to communities is easier than ever. From cruising past traffic

in the US 36 Express Lanes to relaxing on the Flatiron Flyer to feeling the wind in your hair on the US 36 Bikeway, our region boasts a rich blend of state-of-the-art multimodal options to connect people to places.



## Northwest Metro Region COMMUTER GUIDE

Less time in traffic.  
More time for the things that matter.



### RTD Service and Station Locations

- 128 Local
- LD1 Regional
- AB SkyRide
- FF Flatiron Flyer
- FLEX TransFort
- Bus Rapid Transit Station
- Park-n-Ride Location
- Rail Station
- Express Lanes
- US 36 Bikeway

### FlexRide Service Areas



### Overlapping FlexRide Service Areas

RTD FlexRide is a convenient curb-to-curb service designed to supplement existing RTD service between your station and home, school or office. To view maps or schedules, visit [rtd-denver.com/flexride](http://rtd-denver.com/flexride).





# Find your best commute.

## Connect in the Northwest Metro Region.



### Bus

Whether you're traveling to Boulder, Denver, Longmont or any community in between, seamlessly connect to your destination by transit. The northwest metro region offers multiple regional transit services including the Flatiron Flyer Bus Rapid Transit service connecting Boulder and Denver, as well as the L service connecting Longmont to Denver.

For those traveling locally, the Boulder Community Transit Network offers high-quality, frequent and convenient transit routes.



### Bike

Enjoy the wind in your hair and zip past traffic by traveling by bike throughout the northwest metro region. Commonly referred to as a "highway for cyclists", the northwest metro region is home to the US 36 Bikeway connecting US 36 & Table Mesa Station in Boulder to 80th Avenue in Westminster. Interested in a route between Longmont and Boulder? We recommend riding along the LoBo trail or on the Diagonal Highway shoulder.



### Ride Share

Through our partnership with Way to Go, Commuting Solutions offers carpool and vanpool services to commuters throughout the region. Ride sharing is an easy way to save time, money and stress.

For those that need help getting their kids to and from school, Way to Go also offers Schoolpool. Schoolpool connects families to share the responsibilities of getting the kids to school and back via carpooling, walking, biking or riding the bus.



### Express Lanes

The US 36 Express Lanes offer a variety of travel options for those looking to get where they are going – fast! Carpools (vehicles with 3 or more passengers) and transit travel for free in the US 36 Express Lanes. Learn more about the US 36 Express Lanes, I-25 Express Lanes and paying the toll by visiting [commutingsolutions.org](http://commutingsolutions.org).



### Rail

Commuters are encouraged to sit back, relax and enjoy the ride on RTD's B Line, the first commuter rail station to connect Union Station in Denver and Westminster station in just 11 minutes!

The B Line service operates between 5 a.m. to 10 p.m. with peak and off-peak schedules. During peak hours of 6 to 9 a.m. and 3 to 6 p.m., the service runs every 30 minutes Monday through Friday. During non-peak hours, the service runs every 60 minutes.

## Nonstop to and from the airport.

### SkyRide

RTD's SkyRide service offers a convenient, affordable option to get to and from Denver International Airport (DEN). The SkyRide service connects to stations along US 36 and I-25 corridors. Find a station and SkyRide schedule by visiting [rtd-denver.com](http://rtd-denver.com).

### Northwest Parkway

The Northwest Parkway is a 75-mile per hour toll road, connecting E-470 at I-25 in the north metro Denver area, with US 36 in Broomfield.

### E-470

Skip the traffic and cruise straight to the airport by utilizing E-470 for your next drive to Denver International Airport. E-470 is a nonstop, cashless, all-electronic toll highway.



## Pedal to transit.

### Bike Share Expansion

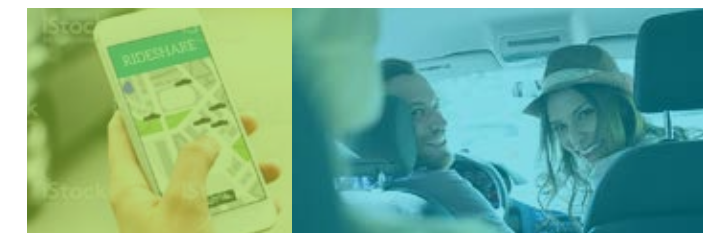
No bike? No problem! Cruising through the northwest metro region is easier than ever with our flourishing bike share program. Whether a resident, employee or visitor, flawlessly connect to communities throughout the region.

### Bike-n-Ride

The Bike-n-Ride program allows commuters to enjoy a bus and bike commute. The bike shelters provide safe and secure bike parking to make the first and final mile of any commute a breeze! Learn more about the Bike-n-Ride program by visiting [commutingsolutions.org](http://commutingsolutions.org).

## Be ride savvy.

Technology is rapidly changing the way we travel in the northwest metro region! For a complete list of ride sharing options and transportation technology resources, please visit [commutingsolutions.org](http://commutingsolutions.org).



**We go together.**



Way to Go is a program of Denver Regional Council of Governments, a planning organization where local governments collaborate to establish guidelines, set policy and allocate funding in the areas of transportation and personal mobility, regional growth and development, and aging and disability resources. Way to Go's mission is to reduce congestion and increase air quality by providing smart commuting options to folks throughout the Denver region. For more information visit [waytogo.org](http://waytogo.org).

Commuting Solutions is dedicated to delivering innovative transportation options that connect commuters to their workplaces, businesses to their employees, and residents to their communities. Through advocacy for infrastructure and transportation improvements, partnerships and education, we create progressive, flexible transportation solutions. For more information about Commuting Solutions, please visit [commutingsolutions.org](http://commutingsolutions.org).